



PRINCE SHRI VENKATESWARA ARTS AND SCIENCE COLLEGE

Gowrivakkam, Chennai-600073

Affiliated to University of Madras, ISO 9001:2015 Certified Institution
Recognized by UGC under section 2(f) of UGC Act 1956

9	Rate the composition of the courses in terms of Language papers, Core Papers, Allied Papers, Elective Papers, Soft Skills, Non-major Electives, Value Education, Project etc. (Related to Curriculum)	3	2	0	0	0
10	Rate the availability of text books, reference books, Digital Resources and Reading Material Support facilities in library and research environment (Related to infrastructure facilities & ambience of the institution)	3	1	0	0	1
11	Rate the infrastructure available in the college/ department and its usage efficiently (Related to infrastructure facilities & ambience of the institution)	4	1	0	0	0
12	Rate the classroom, lab, IT and other facilities (Related to infrastructure facilities & ambience of the institution)	4	0	1	0	0
13	Rate the maintenance of classrooms, laboratory, sports facilities, faculty cabin, toilets, rest rooms etc. (Related to infrastructure facilities & ambience of the institution)	3	2	0	0	0
14	Rate the encouragement by the institution for performing research, startup and entrepreneurial activities by the faculty (Related to ambience of the institution)	4	0	0	1	0
15	Rate the opportunity extended and financial aid to participate in Faculty development, Conferences, Workshops and etc., (Related to ambience of the institution)	3	2	0	0	0
16	Rate the working environment such as the relationship with co-workers and superiors, organizational culture etc. (Related to ambience of the institution)	4	1	0	0	0
17	Rate the faculty welfare measures taken by the institution (Related to ambience of the institution)	3	2	0	0	0
18	Rate the recognition/ appraisal system / Incentive/ Appreciation of the individual work by the institution (Related to ambience of the institution)	3	2	0	0	0
19	Rate the encouragement for taking-up consultancy works (Related to ambience of the institution)	3	1	1	0	0
20	Rate the uniform work distribution and work load for all the faculty in the department (Related to ambience of the institution)	3	2	0	0	0



P. Kalpana
PRINCE SHRI VENKATESHWARA
ARTS AND SCIENCE COLLEGE
GOWRIVAKKAM, CHENNAI-600 073.

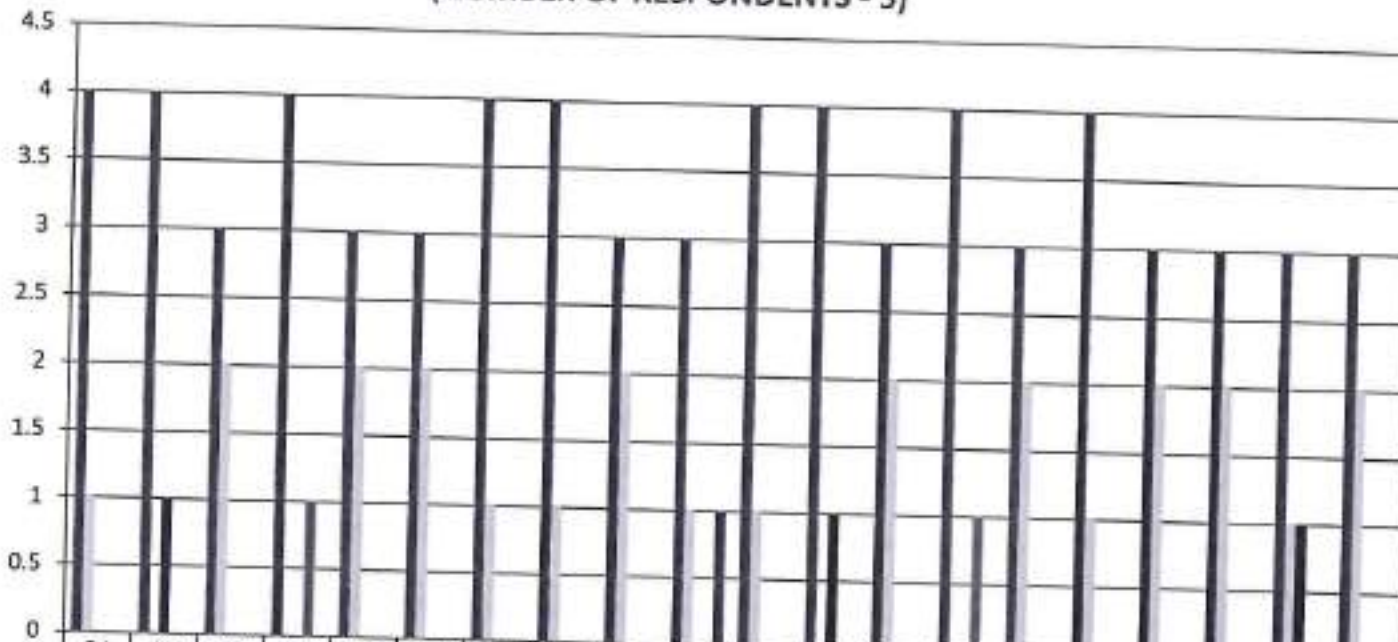


PRINCE SHRI VENKATESWARA ARTS AND SCIENCE COLLEGE

Gowrivaikam, Chennai-600073.

Affiliated to University of Madras, ISO 9001:2015 Certified Institution
Recognized by UGC under section 2(f) of UGC Act 1956

**FACULTY FEEDBACK ON CURRICULUM, INFRASTRUCTURE
FACILITIES & AMBIENCE OF THE INSTITUTION - 2022-2023**
B.Sc. BIOCHEMISTRY
(NUMBER OF RESPONDENTS - 5)



B. Kalpana
PRINCIPAL
PRINCE SHRI VENKATESHWARA
ARTS AND SCIENCE COLLEGE



PRINCE SHRI VENKATESWARA ARTS AND SCIENCE COLLEGE

Gowrivakkam, Chennai-600073.

Affiliated to University of Madras, ISO 9001:2015 Certified Institution
Recognized by UGC under section 2(f) of UGC Act 1956

9	Rate the composition of the courses in terms of Language papers, Core Papers, Allied Papers, Elective Papers, Soft Skills, Non-major Electives, Value Education, Project etc. (Related to Curriculum)	1	2	0	1	0
10	Rate the availability of text books, reference books, Digital Resources and Reading Material Support facilities in library and research environment (Related to infrastructure facilities & ambience of the institution)	2	0	2	0	0
11	Rate the infrastructure available in the college/ department and its usage efficiently (Related to infrastructure facilities & ambience of the institution)	1	3	0	0	0
12	Rate the classroom, lab, IT and other facilities (Related to infrastructure facilities & ambience of the institution)	1	3	0	0	0
13	Rate the maintenance of classrooms, laboratory, sports facilities, faculty cabin, toilets, rest rooms etc. (Related to infrastructure facilities & ambience of the institution)	2	1	0	1	0
14	Rate the encouragement by the institution for performing research, startup and entrepreneurial activities by the faculty (Related to ambience of the institution)	3	1	0	0	0
15	Rate the opportunity extended and financial aid to participate in Faculty development, Conferences, Workshops and etc., (Related to ambience of the institution)	1	2	0	1	0
16	Rate the working environment such as the relationship with co-workers and superiors, organizational culture etc. (Related to ambience of the institution)	2	1	0	1	0
17	Rate the faculty welfare measures taken by the institution (Related to ambience of the institution)	3	1	0	0	0
18	Rate the recognition/ appraisal system / Incentive/ Appreciation of the individual work by the institution (Related to ambience of the institution)	3	1	0	0	0
19	Rate the encouragement for taking-up consultancy works (Related to ambience of the institution)	4	0	0	0	0
	Rate the uniform work distribution and work load for all the faculty in the department (Related to ambience of the institution)	1	3	0	0	0



B. Kalpana
PRINCIPAL

PRINCE SHRI VENKATESHWARA
ARTS AND SCIENCE COLLEGE
GOWRIVAKKAM, CHENNAI-600 073.



PRINCE SHRI VENKATESWARA ARTS AND SCIENCE COLLEGE

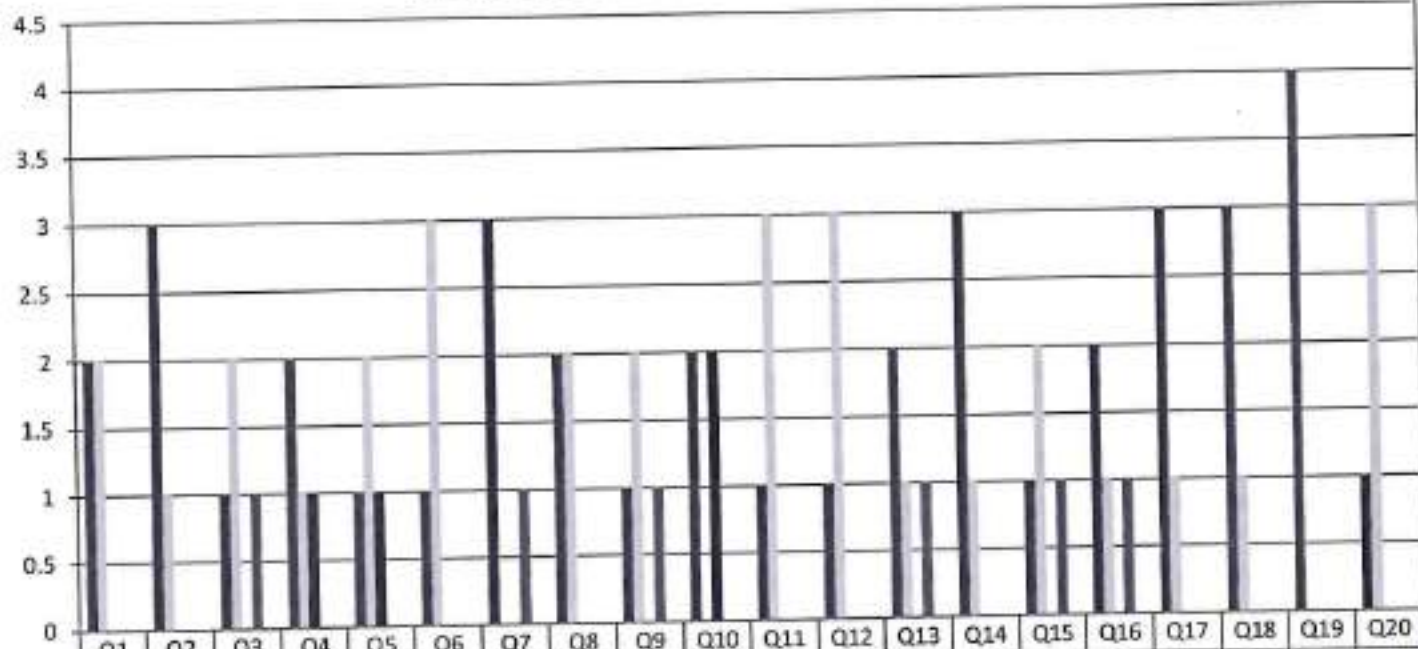
Gowrivakkam, Chennai-600073.

Affiliated to University of Madras, ISO 9001:2015 Certified Institution
Recognized by UGC under section 2(f) of UGC Act 1956

FACULTY FEEDBACK ON CURRICULUM, INFRASTRUCTURE FACILITIES & AMBIENCE OF THE INSTITUTION - 2022-2023

B.Sc. MICROBIOLOGY

(NUMBER OF RESPONDENTS - 4)



P. Kalpana
PRINCIPAL
PRINCE SHRI VENKATESHWARA
ARTS AND SCIENCE COLLEGE
GOWRIVAKKAM, CHENNAI-600 073.



PRINCE SHRI VENKATESWARA ARTS AND SCIENCE COLLEGE

Gowrivakkam, Chennai-600073.

Affiliated to University of Madras, ISO 9001:2015 Certified Institution
Recognized by UGC under section 2(f) of UGC Act 1956

FACULTY FEEDBACK ON CURRICULUM, INFRASTRUCTURE FACILITIES & AMBIENCE OF THE INSTITUTION – ANALYSIS REPORT

Academic Year **2022-23**
Department **B.Sc. Electronics and Communication Science**
Number of Respondents **3**

Feedback Rate: Strongly Agree (5), Agree (4), Neutral (3), Disagree (2), Strongly Disagree (1)

S. No	Feedback on Curriculum, infrastructure facilities & ambience of the institution	5	4	3	2	1
1	Rate the sequence of the courses provided in the curriculum (Related to Curriculum)	1	0	2	0	0
2	Rate the syllabus of the courses in relation to the competencies expected out of the course (Related to Curriculum)	2	1	0	0	0
3	Rate the Curriculum facilitation for adoption of new techniques/education tools / strategies in teaching. (Related to Curriculum)	1	1	1	0	0
4	Rate the coverage of Programme / course outcome with the curriculum (Related to Curriculum)	2	0	0	1	0
5	Rate the allocation of the credits and contact hours (L-T-P) to the courses (Related to Curriculum)	2	0	1	0	0
6	Rate the offering of the electives in terms of their relevance to the specialization streams and technological advancements (Related to Curriculum)	2	1	0	0	0
7	Rate the courses in terms of extra learning or self-learning considering the design of the courses. (Related to Curriculum)	2	1	0	0	0
8	Rate the professional development, faculty development and administrative training programs conducted by the institution (Related to Curriculum)	1	1	1	0	0



PRINCE SHRI VENKATESWARA ARTS AND SCIENCE COLLEGE

Gowrivakkam, Chennai-600073.

Affiliated to University of Madras, ISO 9001:2015 Certified Institution
Recognized by UGC under section 2(f) of UGC Act 1956

9	Rate the composition of the courses in terms of Language papers, Core Papers, Allied Papers, Elective Papers, Soft Skills, Non-major Electives, Value Education, Project etc. (Related to Curriculum)	1	0	2	0	0
10	Rate the availability of text books, reference books, Digital Resources and Reading Material Support facilities in library and research environment (Related to infrastructure facilities & ambience of the institution)	1	0	1	1	0
11	Rate the infrastructure available in the college/ department and its usage efficiently (Related to infrastructure facilities & ambience of the institution)	2	1	0	0	0
12	Rate the classroom, lab, IT and other facilities (Related to infrastructure facilities & ambience of the institution)	2	0	1	0	0
13	Rate the maintenance of classrooms, laboratory, sports facilities, faculty cabin, toilets, rest rooms etc. (Related to infrastructure facilities & ambience of the institution)	1	0	2	0	0
14	Rate the encouragement by the institution for performing research, startup and entrepreneurial activities by the faculty (Related to ambience of the institution)	2	0	1	0	0
15	Rate the opportunity extended and financial aid to participate in Faculty development, Conferences, Workshops and etc., (Related to ambience of the institution)	2	0	0	1	0
16	Rate the working environment such as the relationship with co-workers and superiors, organizational culture etc. (Related to ambience of the institution)	1	0	2	0	0
17	Rate the faculty welfare measures taken by the institution (Related to ambience of the institution)	2	0	0	1	0
18	Rate the recognition/ appraisal system / Incentive/ Appreciation of the individual work by the institution (Related to ambience of the institution)	1	0	2	0	0
19	Rate the encouragement for taking-up consultancy works (Related to ambience of the institution)	2	0	0	1	0
20	Rate the uniform work distribution and work load for all the faculty in the department (Related to ambience of the institution)	3	0	0	0	0



P. Kalpana
PRINCIPAL
PRINCE SHRI VENKATESHWARA
ARTS AND SCIENCE COLLEGE
GOWRIVAKKAM, CHENNAI-600 073.



PRINCE SHRI VENKATESWARA ARTS AND SCIENCE COLLEGE

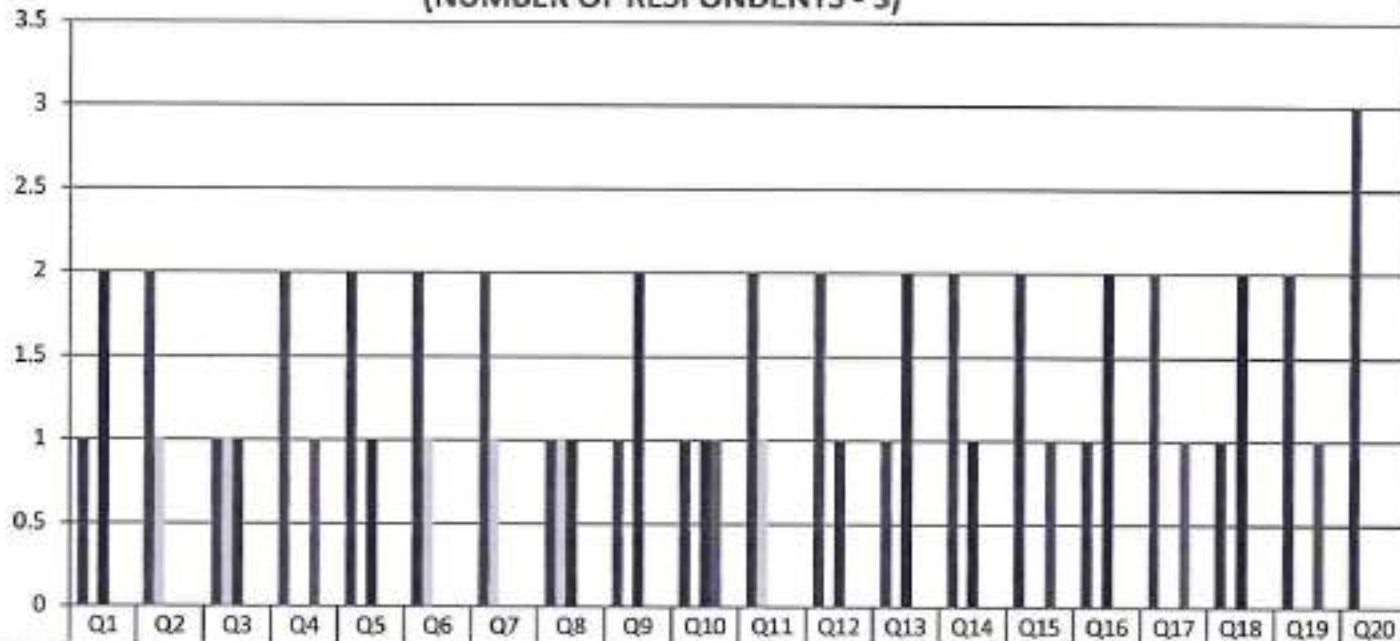
Gowrivakkam, Chennai-600073.

Affiliated to University of Madras, ISO 9001:2015 Certified Institution

Recognized by UGC under section 2(f) of UGC Act 1956

**FACULTY FEEDBACK ON CURRICULUM, INFRASTRUCTURE
FACILITIES & AMBIENCE OF THE INSTITUTION - 2022-2023
B.Sc. ELECTRONICS AND COMMUNICATION SCIENCE**

(NUMBER OF RESPONDENTS - 3)



B. Kalpana
PRINCIPAL
PRINCE SHRI VENKATESHWARA
ARTS AND SCIENCE COLLEGE,
GOWRIVAKKAM, CHENNAI-600 073



PRINCE SHRI VENKATESWARA ARTS AND SCIENCE COLLEGE

Gowrivakkam, Chennai-600073.

Affiliated to University of Madras, ISO 9001:2015 Certified Institution
Recognized by UGC under section 2(f) of UGC Act 1956

9	Rate the composition of the courses in terms of Language papers, Core Papers, Allied Papers, Elective Papers, Soft Skills, Non-major Electives, Value Education, Project etc. (Related to Curriculum)	5	1	1	0	0
10	Rate the availability of text books, reference books, Digital Resources and Reading Material Support facilities in library and research environment (Related to infrastructure facilities & ambience of the institution)	2	4	0	1	0
11	Rate the infrastructure available in the college/ department and its usage efficiently (Related to infrastructure facilities & ambience of the institution)	4	1	2	0	0
12	Rate the classroom, lab, IT and other facilities (Related to infrastructure facilities & ambience of the institution)	5	2	0	0	0
13	Rate the maintenance of classrooms, laboratory, sports facilities, faculty cabin, toilets, rest rooms etc. (Related to infrastructure facilities & ambience of the institution)	5	1	1	0	0
14	Rate the encouragement by the institution for performing research, startup and entrepreneurial activities by the faculty (Related to ambience of the institution)	5	1	1	0	0
15	Rate the opportunity extended and financial aid to participate in Faculty development, Conferences, Workshops and etc., (Related to ambience of the institution)	6	1	0	0	0
16	Rate the working environment such as the relationship with co-workers and superiors, organizational culture etc. (Related to ambience of the institution)	4	3	0	0	0
17	Rate the faculty welfare measures taken by the institution (Related to ambience of the institution)	3	3	1	0	0
18	Rate the recognition/ appraisal system / Incentive/ Appreciation of the individual work by the institution (Related to ambience of the institution)	5	0	2	0	0
19	Rate the encouragement for taking-up consultancy works (Related to ambience of the institution)	4	2	1	0	0
20	Rate the uniform work distribution and work load for all the faculty in the department (Related to ambience of the institution)	5	1	0	1	0



B. Kalpana
PRINCIPAL
PRINCE SHRI VENKATESHWARA
ARTS AND SCIENCE COLLEGE
GOWRIVAKKAM, CHENNAI-600 073.



PRINCE SHRI VENKATESWARA ARTS AND SCIENCE COLLEGE

Gowrivakkam, Chennai-600073.

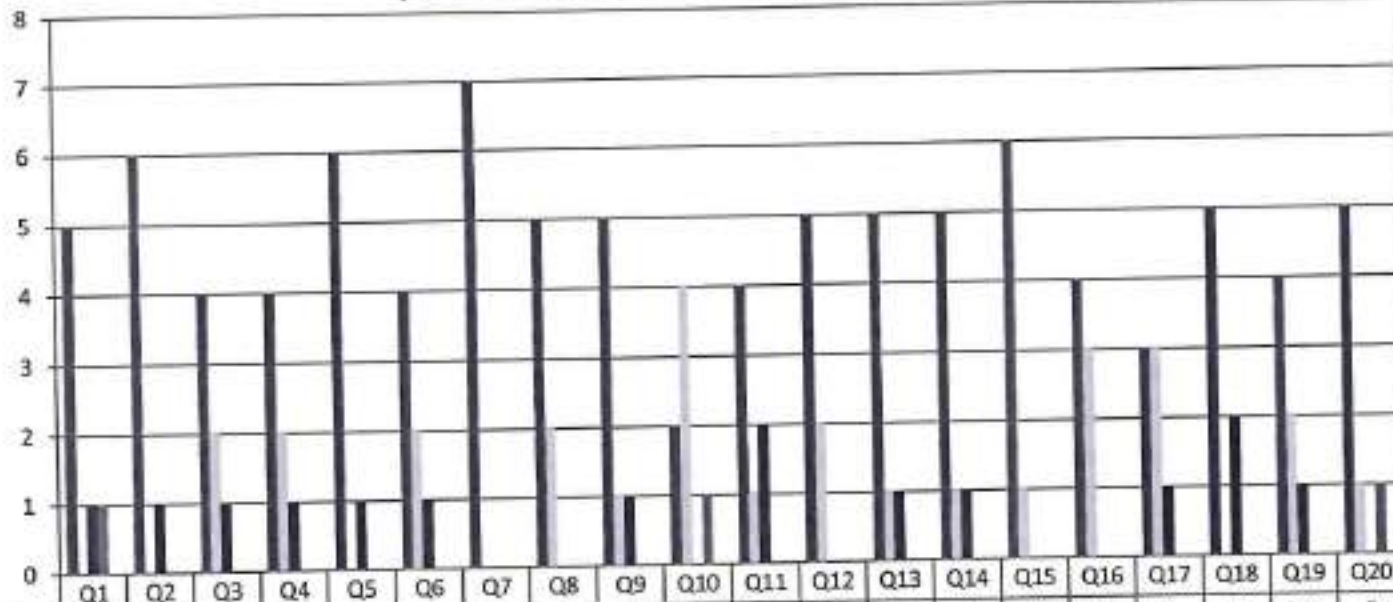
Affiliated to University of Madras, ISO 9001:2015 Certified Institution

Recognized by UGC under section 2(f) of UGC Act 1956

**FACULTY FEEDBACK ON CURRICULUM, INFRASTRUCTURE
FACILITIES & AMBIENCE OF THE INSTITUTION - 2022-2023**

B.Sc. COMPUTER SCIENCE

(NUMBER OF RESPONDENTS - 7)



Strongly Agree (5)	5	6	4	4	6	4	7	5	5	2	4	5	5	5	6	4	3	5	4	5
Agree (4)	0	0	2	2	0	2	0	2	1	4	1	2	1	1	1	3	3	0	2	1
Neutral (3)	1	1	1	1	1	1	0	0	1	0	2	0	1	1	0	0	1	2	1	0
Disagree (2)	1	0	0	0	0	0	0	0	0	1	0	0	0	0	0	0	0	0	0	1
Strongly Disagree (1)	0	0	0	0	0	0	0	0	0	0	0	0	0	0	0	0	0	0	0	0



B. Kalpana
PRINCIPAL
PRINCE SHRI VENKATESHWARA
ARTS AND SCIENCE COLLEGE
GOWRIVAKKAM, CHENNAI-600073.



PRINCE SHRI VENKATESWARA ARTS AND SCIENCE COLLEGE

Gowrivakkam, Chennai-600073.

Affiliated to University of Madras, ISO 9001:2015 Certified Institution
Recognized by UGC under section 2(f) of UGC Act 1956

9	Rate the composition of the courses in terms of Language papers, Core Papers, Allied Papers, Elective Papers, Soft Skills, Non-major Electives, Value Education, Project etc. (Related to Curriculum)	5	2	1	0	0
10	Rate the availability of text books, reference books, Digital Resources and Reading Material Support facilities in library and research environment (Related to infrastructure facilities & ambience of the institution)	5	2	0	1	0
11	Rate the infrastructure available in the college/ department and its usage efficiently (Related to infrastructure facilities & ambience of the institution)	7	1	0	0	0
12	Rate the classroom, lab, IT and other facilities (Related to infrastructure facilities & ambience of the institution)	6	1	1	0	0
13	Rate the maintenance of classrooms, laboratory, sports facilities, faculty cabin, toilets, rest rooms etc. (Related to infrastructure facilities & ambience of the institution)	5	2	0	0	1
14	Rate the encouragement by the institution for performing research, startup and entrepreneurial activities by the faculty (Related to ambience of the institution)	5	2	1	0	0
15	Rate the opportunity extended and financial aid to participate in Faculty development, Conferences, Workshops and etc., (Related to ambience of the institution)	6	2	0	0	0
16	Rate the working environment such as the relationship with co-workers and superiors, organizational culture etc. (Related to ambience of the institution)	4	1	3	0	0
17	Rate the faculty welfare measures taken by the institution (Related to ambience of the institution)	3	4	1	0	0
18	Rate the recognition/ appraisal system / Incentive/ Appreciation of the individual work by the institution (Related to ambience of the institution)	5	2	1	0	0
19	Rate the encouragement for taking-up consultancy works (Related to ambience of the institution)	4	4	0	0	0
20	Rate the uniform work distribution and work load for all the faculty in the department (Related to ambience of the institution)	4	2	1	1	0



B. Kalpana
PRINCIPAL
PRINCE SHRI VENKATESHWARA
ARTS AND SCIENCE COLLEGE
GOWRIVAKKAM, CHENNAI-600 073



PRINCE SHRI VENKATESWARA ARTS AND SCIENCE COLLEGE

Gowrivalkum, Chennai-600073.

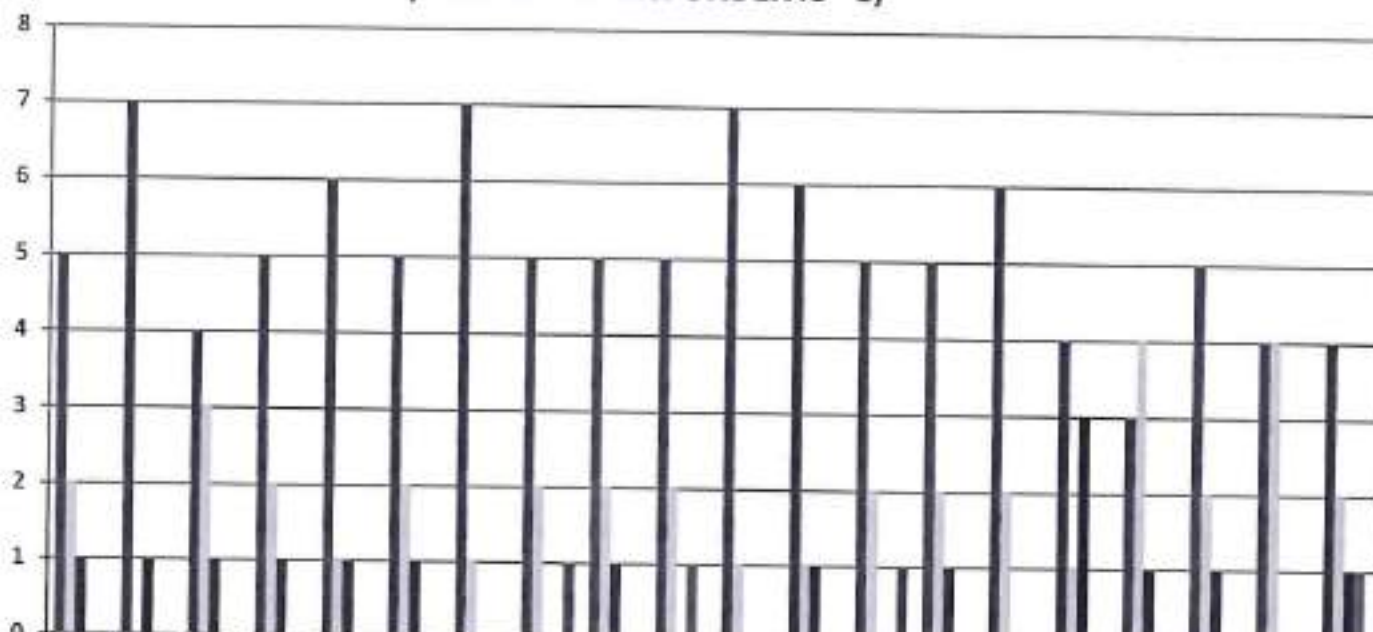
Affiliated to University of Madras, ISO 9001:2015 Certified Institution

Recognized by UGC under section 2(f) of UGC Act 1956

**FACULTY FEEDBACK ON CURRICULUM, INFRASTRUCTURE
FACILITIES & AMBIENCE OF THE INSTITUTION - 2022-2023**

B.COM (GENERAL)

(NUMBER OF RESPONDENTS - 8)



	Q1	Q2	Q3	Q4	Q5	Q6	Q7	Q8	Q9	Q10	Q11	Q12	Q13	Q14	Q15	Q16	Q17	Q18	Q19	Q20
Strongly Agree (5)	5	7	4	5	6	5	7	5	5	5	7	6	5	5	6	4	3	5	4	4
Agree (4)	0	0	3	2	1	2	1	2	2	2	1	1	2	2	2	1	4	2	4	2
Neutral (3)	1	1	1	1	1	1	0	0	1	0	0	1	0	1	0	3	1	1	0	1
Disagree (2)	0	0	0	0	0	0	0	0	0	1	0	0	0	0	0	0	0	0	0	1
Strongly Disagree (1)	0	0	0	0	0	0	0	1	0	0	0	0	0	0	0	0	0	0	0	0



B. Kalpana
PRINCIPAL



PRINCE SHRI VENKATESWARA ARTS AND SCIENCE COLLEGE

Gowrivakkam, Chennai-600073.

Affiliated to University of Madras, ISO 9001:2015 Certified Institution

Recognized by UGC under section 2(f) of UGC Act 1956

9	Rate the composition of the courses in terms of Language papers, Core Papers, Allied Papers, Elective Papers, Soft Skills, Non-major Electives, Value Education, Project etc. (Related to Curriculum)	2	2	0	0	1
10	Rate the availability of text books, reference books, Digital Resources and Reading Material Support facilities in library and research environment (Related to infrastructure facilities & ambience of the institution)	2	2	1	0	0
11	Rate the infrastructure available in the college/ department and its usage efficiently (Related to infrastructure facilities & ambience of the institution)	3	0	2	0	0
12	Rate the classroom, lab, IT and other facilities (Related to infrastructure facilities & ambience of the institution)	3	2	0	0	0
13	Rate the maintenance of classrooms, laboratory, sports facilities, faculty cabin, toilets, rest rooms etc. (Related to infrastructure facilities & ambience of the institution)	2	2	0	1	0
14	Rate the encouragement by the institution for performing research, startup and entrepreneurial activities by the faculty (Related to ambience of the institution)	2	3	0	0	0
15	Rate the opportunity extended and financial aid to participate in Faculty development, Conferences, Workshops and etc., (Related to ambience of the institution)	2	2	1	0	0
16	Rate the working environment such as the relationship with co-workers and superiors, organizational culture etc. (Related to ambience of the institution)	3	2	0	0	0
17	Rate the faculty welfare measures taken by the institution (Related to ambience of the institution)	4	1	0	0	0
18	Rate the recognition/ appraisal system / Incentive/ Appreciation of the individual work by the institution (Related to ambience of the institution)	2	2	1	0	0
19	Rate the encouragement for taking-up consultancy works (Related to ambience of the institution)	4	1	0	0	0
20	Rate the uniform work distribution and work load for all the faculty in the department (Related to ambience of the institution)	2	2	1	0	0



B. Kalpana
PRINCIPAL

PRINCE SHRI VENKATESHWARA
ARTS AND SCIENCE COLLEGE
GOWRIVAKKAM CHENNAI-600 073.



PRINCE SHRI VENKATESWARA ARTS AND SCIENCE COLLEGE

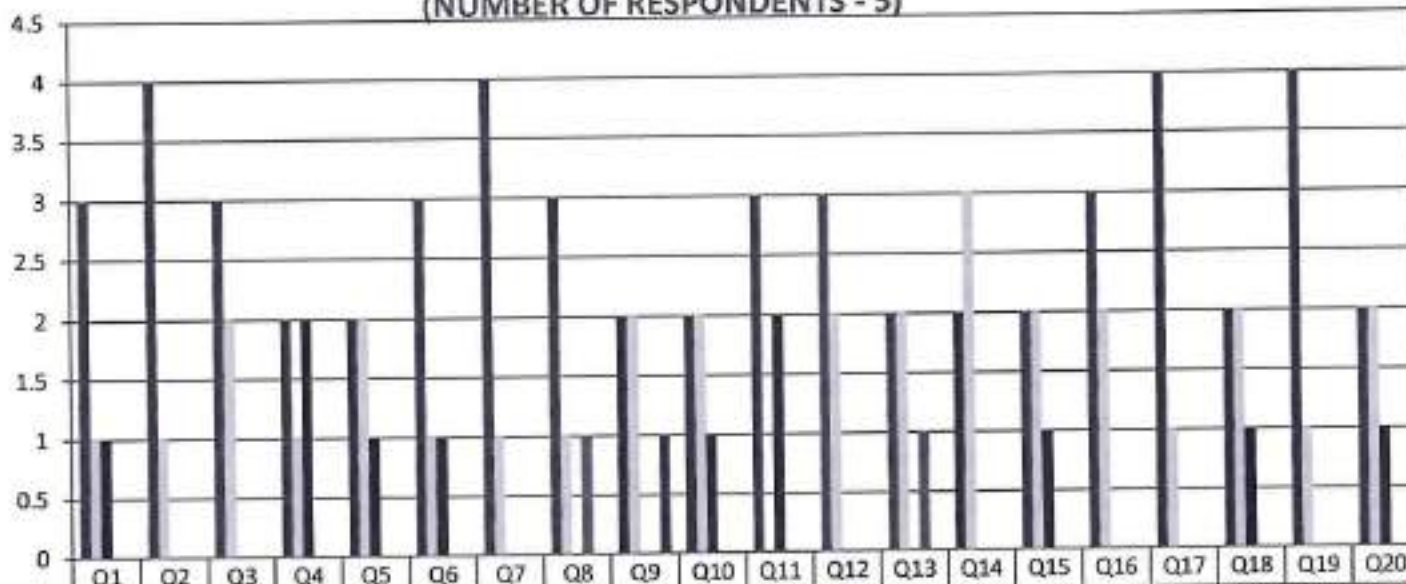
Gowrivaikam, Chennai-600073.

Affiliated to University of Madras, ISO 9001:2015 Certified Institution
Recognized by UGC under section 2(f) of UGC Act 1956

FACULTY FEEDBACK ON CURRICULUM, INFRASTRUCTURE FACILITIES & AMBIENCE OF THE INSTITUTION - 2022-2023

BCA

(NUMBER OF RESPONDENTS - 5)



Strongly Agree (5)	3	4	3	2	2	3	4	3	2	2	3	3	2	2	2	3	4	2	4	2
Agree (4)	1	1	2	1	2	1	1	1	2	2	0	2	2	3	2	2	1	2	1	2
Neutral (3)	1	0	0	2	1	1	0	0	0	1	2	0	0	0	1	0	0	1	0	1
Disagree (2)	0	0	0	0	0	0	0	1	0	0	0	0	1	0	0	0	0	0	0	0
Strongly Disagree (1)	0	0	0	0	0	0	0	0	1	0	0	0	0	0	0	0	0	0	0	0



B. Kalpane
PRINCIPAL
PRINCE SHRI VENKATESHWARA
ARTS AND SCIENCE COLLEGE
GOWRIVAKKAM, CHENNAI-600 073.



PRINCE SHRI VENKATESWARA ARTS AND SCIENCE COLLEGE

Gowrivakkam, Chennai-600073.

Affiliated to University of Madras, ISO 9001:2015 Certified Institution
Recognized by UGC under section 2(f) of UGC Act 1956

9	Rate the composition of the courses in terms of Language papers, Core Papers, Allied Papers, Elective Papers, Soft Skills, Non-major Electives, Value Education, Project etc. (Related to Curriculum)	2	1	1	0	0
10	Rate the availability of text books, reference books, Digital Resources and Reading Material Support facilities in library and research environment (Related to infrastructure facilities & ambience of the institution)	2	1	1	0	0
11	Rate the infrastructure available in the college/ department and its usage efficiently (Related to infrastructure facilities & ambience of the institution)	2	2	0	0	0
12	Rate the classroom, lab, IT and other facilities (Related to infrastructure facilities & ambience of the institution)	2	1	1	0	0
13	Rate the maintenance of classrooms, laboratory, sports facilities, faculty cabin, toilets, rest rooms etc. (Related to infrastructure facilities & ambience of the institution)	2	0	2	0	0
14	Rate the encouragement by the institution for performing research, startup and entrepreneurial activities by the faculty (Related to ambience of the institution)	2	1	1	0	0
15	Rate the opportunity extended and financial aid to participate in Faculty development, Conferences, Workshops and etc., (Related to ambience of the institution)	2	1	0	1	0
16	Rate the working environment such as the relationship with co-workers and superiors, organizational culture etc. (Related to ambience of the institution)	1	1	2	0	0
17	Rate the faculty welfare measures taken by the institution (Related to ambience of the institution)	3	1	0	0	0
18	Rate the recognition/ appraisal system / Incentive/ Appreciation of the individual work by the institution (Related to ambience of the institution)	1	0	2	1	0
19	Rate the encouragement for taking-up consultancy works (Related to ambience of the institution)	3	1	0	0	0
20	Rate the uniform work distribution and work load for all the faculty in the department (Related to ambience of the institution)	3	1	0	0	0



PRINCE SHRI VENKATESHWARA
ARTS AND SCIENCE COLLEGE
GOWRIVAKKAM, CHENNAI-600 073.



PRINCE SHRI VENKATESWARA ARTS AND SCIENCE COLLEGE

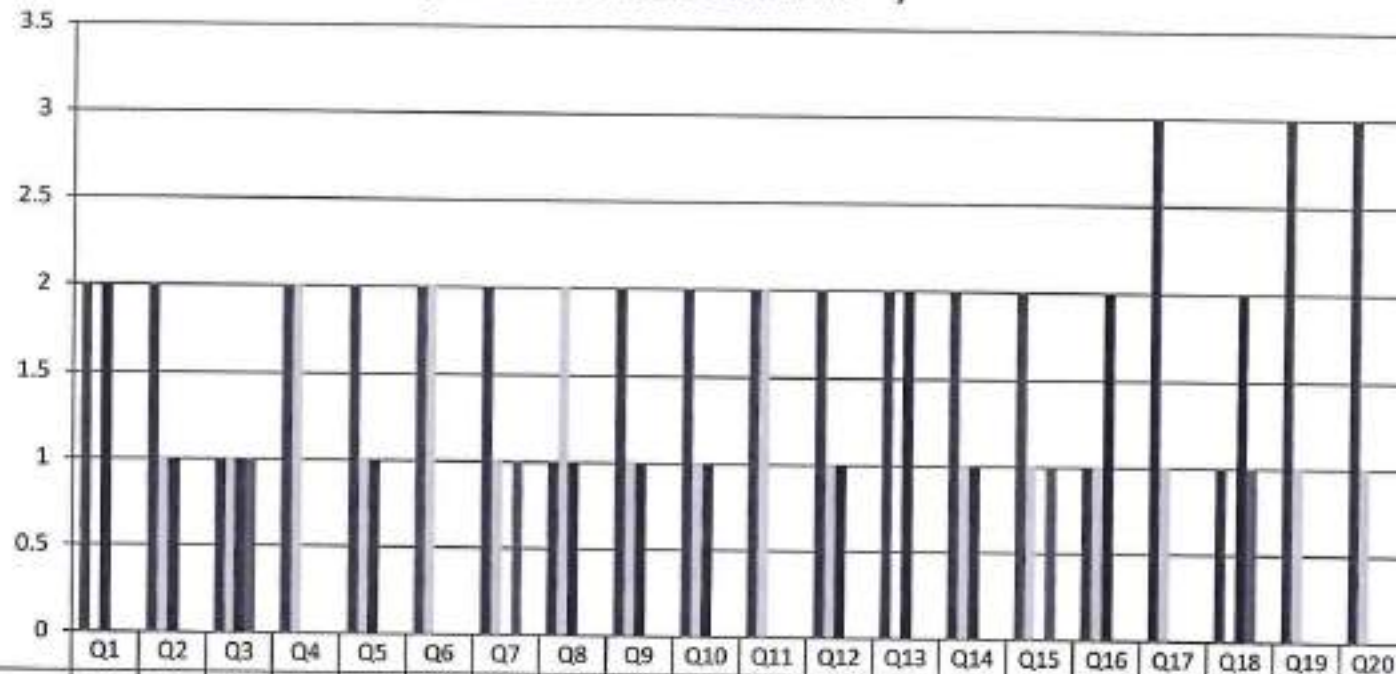
Gowrivaikam, Chennai-600073.

Affiliated to University of Madras, ISO 9001:2015 Certified Institution
Recognized by UGC under section 2(f) of UGC Act 1956

FACULTY FEEDBACK ON CURRICULUM, INFRASTRUCTURE FACILITIES & AMBIENCE OF THE INSTITUTION - 2022-2023

B.Sc. BIOTECHNOLOGY

(NUMBER OF RESPONDENTS - 4)



	Q1	Q2	Q3	Q4	Q5	Q6	Q7	Q8	Q9	Q10	Q11	Q12	Q13	Q14	Q15	Q16	Q17	Q18	Q19	Q20
Strongly Agree (5)	2	2	1	2	2	2	2	1	2	2	2	2	2	2	2	1	3	1	3	3
Agree (4)	0	1	1	2	1	2	1	2	1	1	2	1	0	1	1	1	1	0	1	1
Neutral (3)	2	1	1	0	1	0	0	1	1	1	0	1	2	1	0	2	0	2	0	0
Disagree (2)	0	0	1	0	0	0	1	0	0	0	0	0	0	0	1	0	0	1	0	0
Strongly Disagree (1)	0	0	0	0	0	0	0	0	0	0	0	0	0	0	0	0	0	0	0	0



B. Kalpana
PRINCIPAL
 PRINCE SHRI VENKATESHWARA
 ARTS AND SCIENCE COLLEGE
 GOWRIVAKKAM, CHENNAI-600 073.



PRINCE SHRI VENKATESWARA ARTS AND SCIENCE COLLEGE

Gowrivakkam, Chennai-600073.

Affiliated to University of Madras, ISO 9001:2015 Certified Institution

Recognized by UGC under section 2(f) of UGC Act 1956

FACULTY FEEDBACK ON CURRICULUM, INFRASTRUCTURE FACILITIES & AMBIENCE OF THE INSTITUTION – ANALYSIS REPORT

Academic Year

2022-23

Department

B. Com - Accounting and Finance

Number of Respondents

3

Feedback Rate: Strongly Agree (5), Agree (4), Neutral (3), Disagree (2), Strongly Disagree (1)

S. No	Feedback on Curriculum, infrastructure facilities & ambience of the institution	5	4	3	2	1
1	Rate the sequence of the courses provided in the curriculum (Related to Curriculum)	2	1	0	0	0
2	Rate the syllabus of the courses in relation to the competencies expected out of the course (Related to Curriculum)	2	1	0	0	0
3	Rate the Curriculum facilitation for adoption of new techniques/education tools / strategies in teaching. (Related to Curriculum)	3	0	0	0	0
4	Rate the coverage of Programme / course outcome with the curriculum (Related to Curriculum)	2	1	0	0	0
5	Rate the allocation of the credits and contact hours (L-T-P) to the courses (Related to Curriculum)	2	1	0	0	0
6	Rate the offering of the electives in terms of their relevance to the specialization streams and technological advancements (Related to Curriculum)	2	1	0	0	0
7	Rate the courses in terms of extra learning or self-learning considering the design of the courses. (Related to Curriculum)	2	0	1	0	0
8	Rate the professional development, faculty development and administrative training programs conducted by the institution (Related to Curriculum)	2	1	0	0	0



PRINCE SHRI VENKATESWARA ARTS AND SCIENCE COLLEGE

Gowrivakkam, Chennai-600073.

Affiliated to University of Madras, ISO 9001:2015 Certified Institution

Recognized by UGC under section 2(f) of UGC Act 1956

9	Rate the composition of the courses in terms of Language papers, Core Papers, Allied Papers, Elective Papers, Soft Skills, Non-major Electives, Value Education, Project etc. (Related to Curriculum)	1	1	0	0	1
10	Rate the availability of text books, reference books, Digital Resources and Reading Material Support facilities in library and research environment (Related to infrastructure facilities & ambience of the institution)	2	1	0	0	0
11	Rate the infrastructure available in the college/ department and its usage efficiently (Related to infrastructure facilities & ambience of the institution)	3	0	0	0	0
12	Rate the classroom, lab, IT and other facilities (Related to infrastructure facilities & ambience of the institution)	1	1	0	0	1
13	Rate the maintenance of classrooms, laboratory, sports facilities, faculty cabin, toilets, rest rooms etc. (Related to infrastructure facilities & ambience of the institution)	3	0	0	0	0
14	Rate the encouragement by the institution for performing research, startup and entrepreneurial activities by the faculty (Related to ambience of the institution)	2	1	0	0	0
15	Rate the opportunity extended and financial aid to participate in Faculty development, Conferences, Workshops and etc., (Related to ambience of the institution)	2	0	1	0	0
16	Rate the working environment such as the relationship with co-workers and superiors, organizational culture etc. (Related to ambience of the institution)	2	1	0	0	0
17	Rate the faculty welfare measures taken by the institution (Related to ambience of the institution)	2	1	0	0	0
18	Rate the recognition/ appraisal system / Incentive/ Appreciation of the individual work by the institution (Related to ambience of the institution)	1	1	1	0	0
19	Rate the encouragement for taking-up consultancy works (Related to ambience of the institution)	3	0	0	0	0
20	Rate the uniform work distribution and work load for all the faculty in the department (Related to ambience of the institution)	1	1	0	1	0



B. Kalpana
PRINCIPAL
PRINCE SHRI VENKATESHWARA
ARTS AND SCIENCE COLLEGE
GOWRIVAKKAM, CHENNAI-600 073.



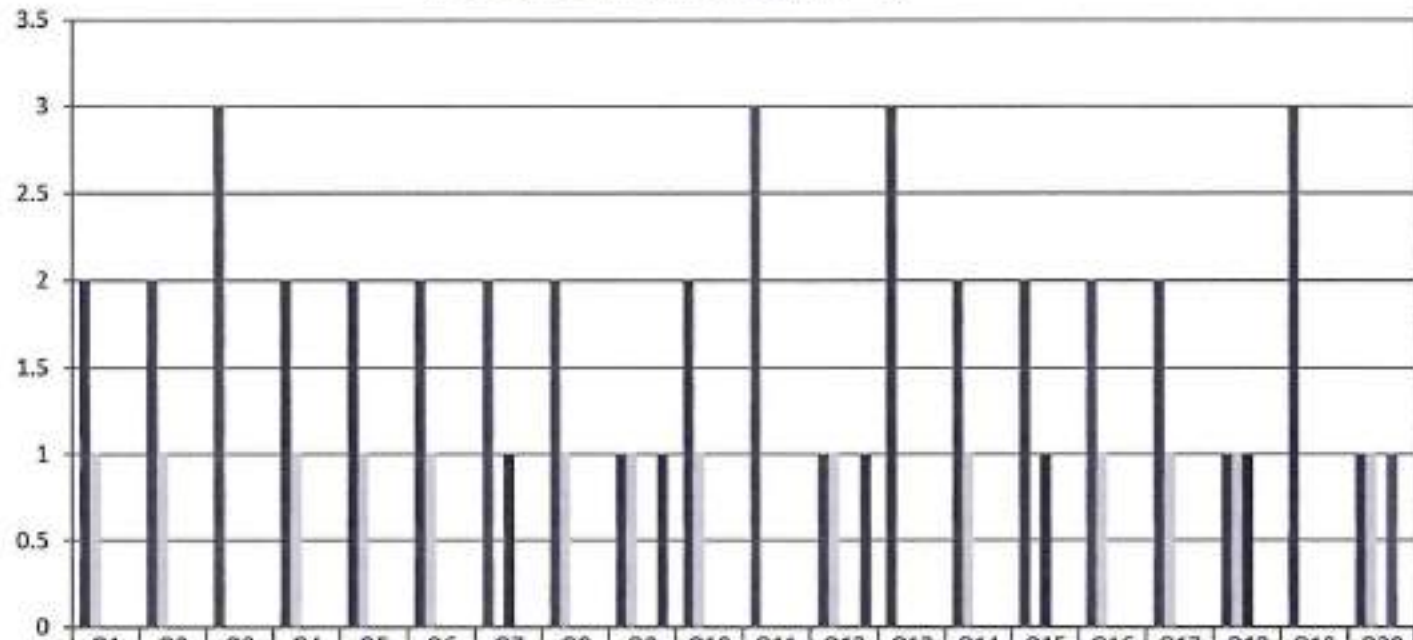
PRINCE SHRI VENKATESWARA ARTS AND SCIENCE COLLEGE

Gowrivakkam, Chennai-600073.

Affiliated to University of Madras, ISO 9001:2015 Certified Institution

Recognized by UGC under section 2(f) of UGC Act 1956

**FACULTY FEEDBACK ON CURRICULUM, INFRASTRUCTURE
FACILITIES & AMBIENCE OF THE INSTITUTION - 2022-2023
B.COM (ACCOUNTING AND FINANCE)
(NUMBER OF RESPONDENTS - 3)**



Strongly Agree (5)	2	2	3	2	2	2	2	2	1	2	3	1	3	2	2	2	2	1	3	1
Agree (4)	1	1	0	1	1	1	0	1	1	1	0	1	0	1	0	1	1	1	0	1
Neutral (3)	0	0	0	0	0	0	1	0	0	0	0	0	0	0	1	0	0	1	0	0
Disagree (2)	0	0	0	0	0	0	0	0	0	0	0	0	0	0	0	0	0	0	0	1
Strongly Disagree (1)	0	0	0	0	0	0	0	0	1	0	0	1	0	0	0	0	0	0	0	0



**PRINCE SHRI VENKATESHWARA
ARTS AND SCIENCE COLLEGE
GOWRIVAKKAM, CHENNAI-600 073.**



PRINCE SHRI VENKATESWARA ARTS AND SCIENCE COLLEGE

Gowrivakkam, Chennai-600073.

Affiliated to University of Madras, ISO 9001:2015 Certified Institution
Recognized by UGC under section 2(f) of UGC Act 1956

9	Rate the composition of the courses in terms of Language papers, Core Papers, Allied Papers, Elective Papers, Soft Skills, Non-major Electives, Value Education, Project etc. (Related to Curriculum)	2	1	0	0	0
10	Rate the availability of text books, reference books, Digital Resources and Reading Material Support facilities in library and research environment (Related to infrastructure facilities & ambience of the institution)	2	1	0	0	0
11	Rate the infrastructure available in the college/ department and its usage efficiently (Related to infrastructure facilities & ambience of the institution)	0	2	1	0	0
12	Rate the classroom, lab, IT and other facilities (Related to infrastructure facilities & ambience of the institution)	2	1	0	0	0
13	Rate the maintenance of classrooms, laboratory, sports facilities, faculty cabin, toilets, rest rooms etc. (Related to infrastructure facilities & ambience of the institution)	2	0	1	0	0
14	Rate the encouragement by the institution for performing research, startup and entrepreneurial activities by the faculty (Related to ambience of the institution)	2	1	0	0	0
15	Rate the opportunity extended and financial aid to participate in Faculty development, Conferences, Workshops and etc., (Related to ambience of the institution)	2	1	0	0	0
16	Rate the working environment such as the relationship with co-workers and superiors, organizational culture etc. (Related to ambience of the institution)	1	2	0	0	0
17	Rate the faculty welfare measures taken by the institution (Related to ambience of the institution)	2	1	0	0	0
18	Rate the recognition/ appraisal system / Incentive/ Appreciation of the individual work by the institution (Related to ambience of the institution)	2	0	1	0	0
19	Rate the encouragement for taking-up consultancy works (Related to ambience of the institution)	1	2	0	0	0
	Rate the uniform work distribution and work load for all the faculty in the department (Related to ambience of the institution)	3	0	0	0	0



P. Kalpana
PRINCIPAL
PRINCE SHRI VENKATESHWARA
ARTS AND SCIENCE COLLEGE
GOWRIVAKKAM, CHENNAI-600 073



PRINCE SHRI VENKATESWARA ARTS AND SCIENCE COLLEGE

Gowrivakkam, Chennai-600073.

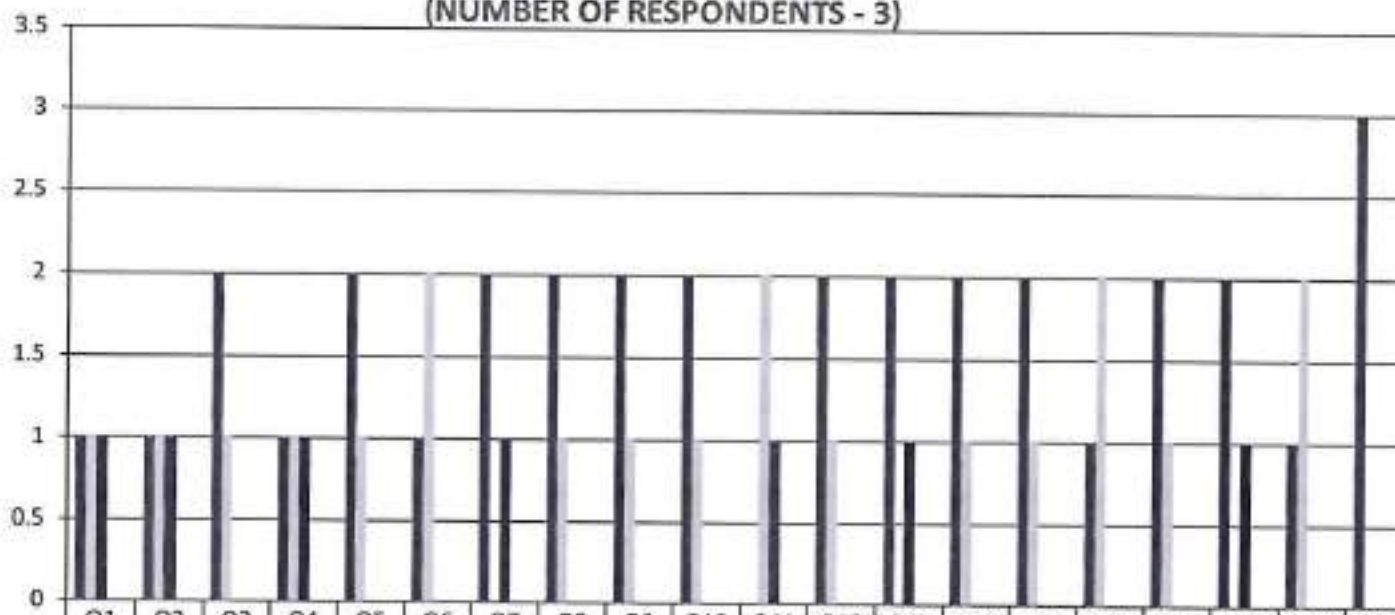
Affiliated to University of Madras, ISO 9001:2015 Certified Institution

Recognized by UGC under section 2(f) of UGC Act 1956

**FACULTY FEEDBACK ON CURRICULUM, INFRASTRUCTURE
FACILITIES & AMBIENCE OF THE INSTITUTION - 2022-2023**

B.A. ENGLISH

(NUMBER OF RESPONDENTS - 3)



	Q1	Q2	Q3	Q4	Q5	Q6	Q7	Q8	Q9	Q10	Q11	Q12	Q13	Q14	Q15	Q16	Q17	Q18	Q19	Q20
Strongly Agree (5)	1	1	2	1	2	1	2	2	2	2	0	2	2	2	2	1	2	2	1	3
Agree (4)	1	1	1	1	1	2	0	1	1	1	2	1	0	1	1	2	1	0	2	0
Neutral (3)	1	1	0	1	0	0	1	0	0	0	1	0	1	0	0	0	0	1	0	0
Disagree (2)	0	0	0	0	0	0	0	0	0	0	0	0	0	0	0	0	0	0	0	0
Strongly Disagree (1)	0	0	0	0	0	0	0	0	0	0	0	0	0	0	0	0	0	0	0	0



B. Kalpana
PRINCIPAL

**PRINCE SHRI VENKATESHWARA
ARTS AND SCIENCE COLLEGE
GOWRIVAKKAM, CHENNAI-600 073.**



PRINCE SHRI VENKATESWARA ARTS AND SCIENCE COLLEGE

Gowrivaikam, Chennai-600073.

Affiliated to University of Madras, ISO 9001:2015 Certified Institution
Recognized by UGC under section 2(f) of UGC Act 1956

9	Rate the composition of the courses in terms of Language papers, Core Papers, Allied Papers, Elective Papers, Soft Skills, Non-major Electives, Value Education, Project etc. (Related to Curriculum)	2	1	1	0	0
10	Rate the availability of text books, reference books, Digital Resources and Reading Material Support facilities in library and research environment (Related to infrastructure facilities & ambience of the institution)	2	1	1	0	0
11	Rate the infrastructure available in the college/ department and its usage efficiently (Related to infrastructure facilities & ambience of the institution)	3	0	1	0	0
12	Rate the classroom, lab, IT and other facilities (Related to infrastructure facilities & ambience of the institution)	1	3	0	0	0
13	Rate the maintenance of classrooms, laboratory, sports facilities, faculty cabin, toilets, rest rooms etc. (Related to infrastructure facilities & ambience of the institution)	2	1	1	0	0
14	Rate the encouragement by the institution for performing research, startup and entrepreneurial activities by the faculty (Related to ambience of the institution)	2	2	0	0	0
15	Rate the opportunity extended and financial aid to participate in Faculty development, Conferences, Workshops and etc., (Related to ambience of the institution)	1	2	1	0	0
16	Rate the working environment such as the relationship with co-workers and superiors, organizational culture etc. (Related to ambience of the institution)	2	1	0	1	0
17	Rate the faculty welfare measures taken by the institution (Related to ambience of the institution)	2	1	1	0	0
18	Rate the recognition/ appraisal system / Incentive/ Appreciation of the individual work by the institution (Related to ambience of the institution)	1	3	0	0	0
19	Rate the encouragement for taking-up consultancy works (Related to ambience of the institution)	1	2	0	1	0
20	Rate the uniform work distribution and work load for all the faculty in the department (Related to ambience of the institution)	2	2	0	0	0



B. Kalpana
PRINCIPAL
PRINCE SHRI VENKATESHWARA
ARTS AND SCIENCE COLLEGE
GOWRIVAKKAM, CHENNAI-600 073



PRINCE SHRI VENKATESWARA ARTS AND SCIENCE COLLEGE

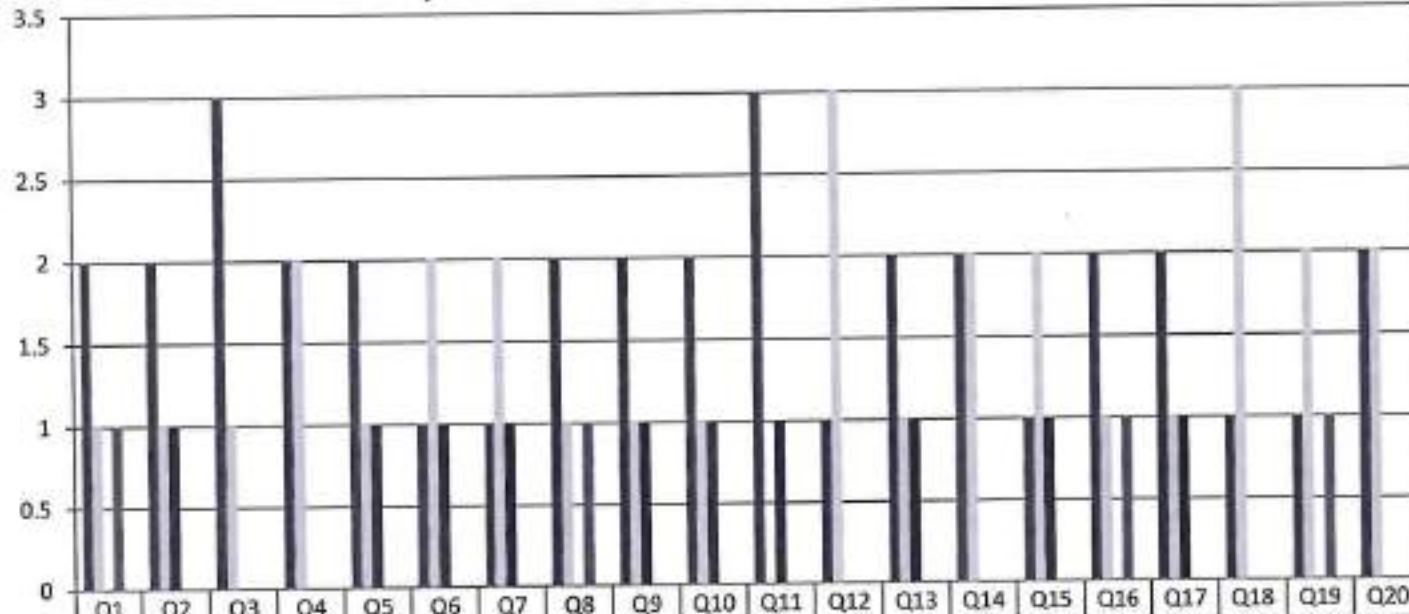
Gowrivakkam, Chennai-600073

Affiliated to University of Madras, ISO 9001:2015 Certified Institution
Recognized by UGC under section 2(f) of UGC Act 1956

FACULTY FEEDBACK ON CURRICULUM, INFRASTRUCTURE FACILITIES & AMBIENCE OF THE INSTITUTION - 2022-2023

BBA

(NUMBER OF RESPONDENTS - 4)



■ Strongly Agree (5)
 ■ Agree (4)
 ■ Neutral (3)
 ■ Disagree (2)
 ■ Strongly Disagree (1)



B. Kalpana
PRINCIPAL
 PRINCE SHRI VENKATESHWARA
 ARTS AND SCIENCE COLLEGE
 GOWRIVAKKAM, CHENNAI-600 073.



PRINCE SHRI VENKATESWARA ARTS AND SCIENCE COLLEGE

Gowrivakkam, Chennai-600073.

Affiliated to University of Madras, ISO 9001:2015 Certified Institution
Recognized by UGC under section 2(f) of UGC Act 1956

9	Rate the composition of the courses in terms of Language papers, Core Papers, Allied Papers, Elective Papers, Soft Skills, Non-major Electives, Value Education, Project etc. (Related to Curriculum)	1	1	0	1	0
10	Rate the availability of text books, reference books, Digital Resources and Reading Material Support facilities in library and research environment (Related to infrastructure facilities & ambience of the institution)	2	1	0	0	0
11	Rate the infrastructure available in the college/ department and its usage efficiently (Related to infrastructure facilities & ambience of the institution)	1	2	0	0	0
12	Rate the classroom, lab, IT and other facilities (Related to infrastructure facilities & ambience of the institution)	2	0	1	0	0
13	Rate the maintenance of classrooms, laboratory, sports facilities, faculty cabin, toilets, rest rooms etc. (Related to infrastructure facilities & ambience of the institution)	3	0	0	0	0
14	Rate the encouragement by the institution for performing research, startup and entrepreneurial activities by the faculty (Related to ambience of the institution)	2	1	0	0	0
15	Rate the opportunity extended and financial aid to participate in Faculty development, Conferences, Workshops and etc., (Related to ambience of the institution)	2	0	1	0	0
16	Rate the working environment such as the relationship with co-workers and superiors, organizational culture etc. (Related to ambience of the institution)	2	1	0	0	0
17	Rate the faculty welfare measures taken by the institution (Related to ambience of the institution)	2	1	0	0	0
18	Rate the recognition/ appraisal system / Incentive/ Appreciation of the individual work by the institution (Related to ambience of the institution)	1	2	0	0	0
19	Rate the encouragement for taking-up consultancy works (Related to ambience of the institution)	3	0	0	0	0
	Rate the uniform work distribution and work load for all the faculty in the department (Related to ambience of the institution)	1	2	0	0	0



B. Kalpana
PRINCIPAL
PRINCE SHRI VENKATESHWARA
ARTS AND SCIENCE COLLEGE
GOWRIVAKKAM, CHENNAI-600073



PRINCE SHRI VENKATESWARA ARTS AND SCIENCE COLLEGE

Gowrivakkam, Chennai-600073.

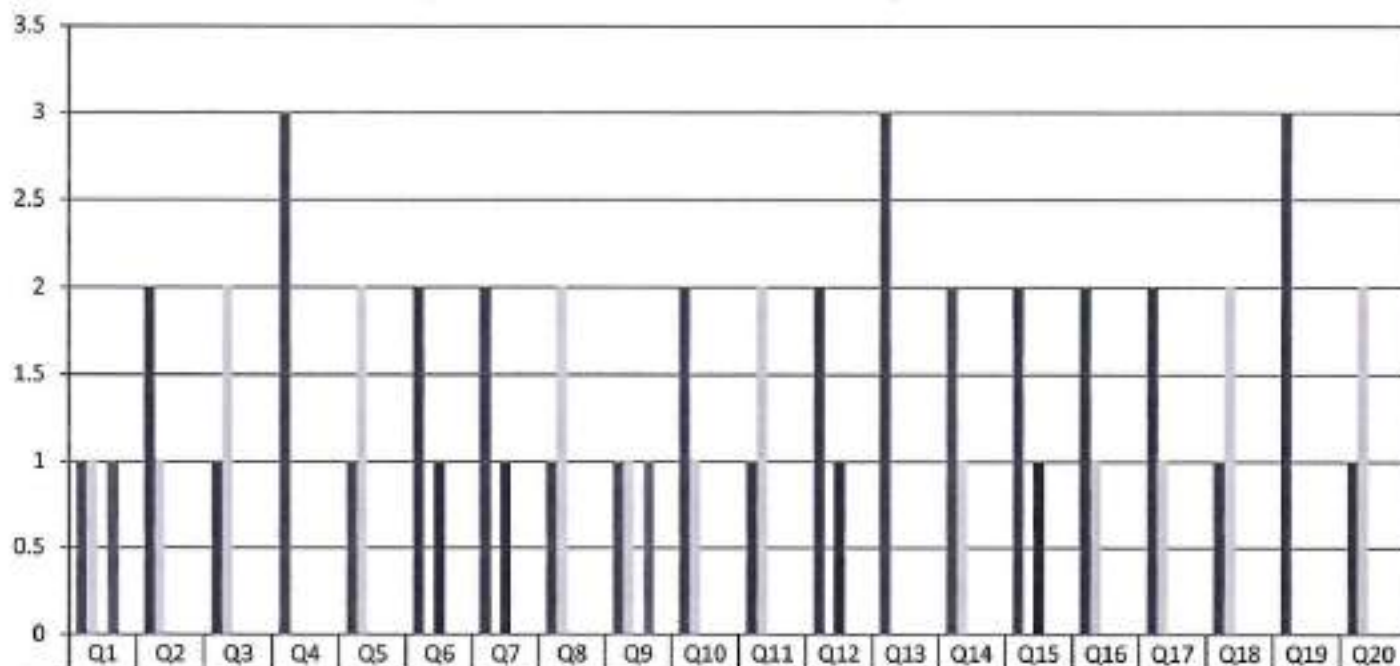
Affiliated to University of Madras, ISO 9001:2015 Certified Institution

Recognized by UGC under section 2(f) of UGC Act 1956

FACULTY FEEDBACK ON CURRICULUM, INFRASTRUCTURE FACILITIES & AMBIENCE OF THE INSTITUTION - 2022-2023

B.Sc. DATA SCIENCE

(NUMBER OF RESPONDENTS - 3)



	Q1	Q2	Q3	Q4	Q5	Q6	Q7	Q8	Q9	Q10	Q11	Q12	Q13	Q14	Q15	Q16	Q17	Q18	Q19	Q20
Strongly Agree (5)	1	2	1	3	1	2	2	1	1	2	1	2	3	2	2	2	2	1	3	1
Agree (4)	0	1	2	0	2	0	0	2	1	1	2	0	0	1	0	1	1	2	0	2
Neutral (3)	0	0	0	0	0	1	1	0	0	0	0	1	0	0	1	0	0	0	0	0
Disagree (2)	1	0	0	0	0	0	0	0	1	0	0	0	0	0	0	0	0	0	0	0
Strongly Disagree (1)	0	0	0	0	0	0	0	0	0	0	0	0	0	0	0	0	0	0	0	0



P. Kalpana
PRINCIPAL
 PRINCE SHRI VENKATESHWARA
 ARTS AND SCIENCE COLLEGE
 GOWRIVAKKAM, CHENNAI-600 073.



PRINCE SHRI VENKATESWARA ARTS AND SCIENCE COLLEGE

Gowrivakkam, Chennai-600073.

Affiliated to University of Madras, ISO 9001:2015 Certified Institution
Recognized by UGC under section 2(f) of UGC Act 1956

9	Rate the composition of the courses in terms of Language papers, Core Papers, Allied Papers, Elective Papers, Soft Skills, Non-major Electives, Value Education, Project etc. (Related to Curriculum)	1	1	0	1	0
10	Rate the availability of text books, reference books, Digital Resources and Reading Material Support facilities in library and research environment (Related to infrastructure facilities & ambience of the institution)	2	1	0	0	0
11	Rate the infrastructure available in the college/ department and its usage efficiently (Related to infrastructure facilities & ambience of the institution)	1	2	0	0	0
12	Rate the classroom, lab, IT and other facilities (Related to infrastructure facilities & ambience of the institution)	2	0	1	0	0
13	Rate the maintenance of classrooms, laboratory, sports facilities, faculty cabin, toilets, rest rooms etc. (Related to infrastructure facilities & ambience of the institution)	3	0	0	0	0
14	Rate the encouragement by the institution for performing research, startup and entrepreneurial activities by the faculty (Related to ambience of the institution)	2	1	0	0	0
15	Rate the opportunity extended and financial aid to participate in Faculty development, Conferences, Workshops and etc., (Related to ambience of the institution)	2	0	1	0	0
16	Rate the working environment such as the relationship with co-workers and superiors, organizational culture etc. (Related to ambience of the institution)	2	1	0	0	0
17	Rate the faculty welfare measures taken by the institution (Related to ambience of the institution)	2	1	0	0	0
18	Rate the recognition/ appraisal system / Incentive/ Appreciation of the individual work by the institution (Related to ambience of the institution)	1	2	0	0	0
19	Rate the encouragement for taking-up consultancy works (Related to ambience of the institution)	3	0	0	0	0
20	Rate the uniform work distribution and work load for all the faculty in the department (Related to ambience of the institution)	1	2	0	0	0



B. Calpani
PRINCIPAL

PRINCE SHRI VENKATESHWARA
ARTS AND SCIENCE COLLEGE
GOWRIVAKKAM, CHENNAI-600 073.

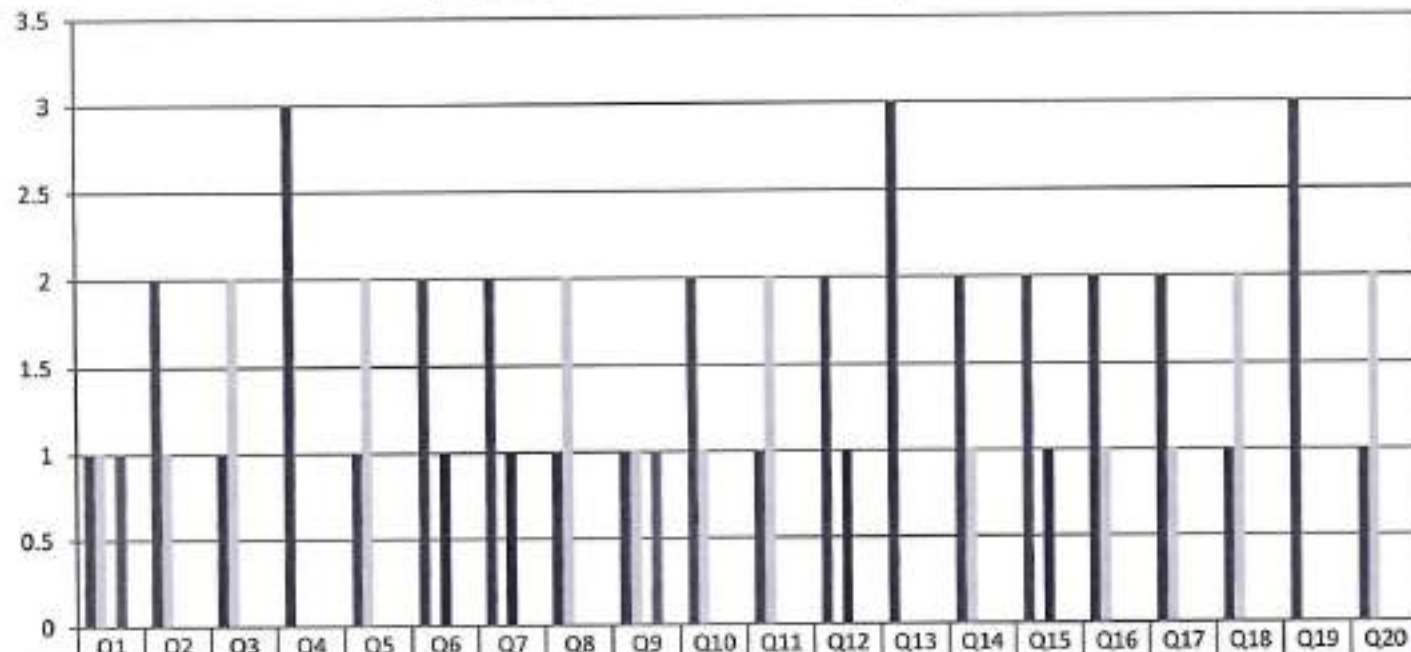


PRINCE SHRI VENKATESWARA ARTS AND SCIENCE COLLEGE

Gowrivaikam, Chennai-600073.

Affiliated to University of Madras, ISO 9001:2015 Certified Institution
Recognized by UGC under section 2(f) of UGC Act 1956

**FACULTY FEEDBACK ON CURRICULUM, INFRASTRUCTURE
FACILITIES & AMBIENCE OF THE INSTITUTION - 2022-2023**
M.Sc. APPLIED MICROBIOLOGY
(NUMBER OF RESPONDENTS - 3)



	Q1	Q2	Q3	Q4	Q5	Q6	Q7	Q8	Q9	Q10	Q11	Q12	Q13	Q14	Q15	Q16	Q17	Q18	Q19	Q20
Strongly Agree (5)	1	2	1	3	1	2	2	1	1	2	1	2	3	2	2	2	2	1	3	1
Agree (4)	1	1	2	0	2	0	0	2	1	1	2	0	0	1	0	1	1	2	0	2
Neutral (3)	0	0	0	0	0	1	1	0	0	0	0	1	0	0	1	0	0	0	0	0
Disagree (2)	1	0	0	0	0	0	0	0	1	0	0	0	0	0	0	0	0	0	0	0
Strongly Disagree (1)	0	0	0	0	0	0	0	0	0	0	0	0	0	0	0	0	0	0	0	0



B. Kalpana
PRINCIPAL
PRINCE SHRI VENKATESHWARA
ARTS AND SCIENCE COLLEGE
GOWRIVAKKAM, CHENNAI-600 073.



PRINCE SHRI VENKATESWARA ARTS AND SCIENCE COLLEGE

Gowrivakkam, Chennai-600073.

Affiliated to University of Madras, ISO 9001:2015 Certified Institution

Recognized by UGC under section 2(f) of UGC Act 1956

FACULTY FEEDBACK ON CURRICULUM, INFRASTRUCTURE FACILITIES & AMBIENCE OF THE INSTITUTION – ANALYSIS REPORT

Academic Year 2022-23
Department M.Sc. Computer Science
Number of Respondents 3

Feedback Rate: Strongly Agree (5), Agree (4), Neutral (3), Disagree (2), Strongly Disagree (1)

S. No	Feedback on Curriculum, infrastructure facilities & ambience of the institution	5	4	3	2	1
1	Rate the sequence of the courses provided in the curriculum (Related to Curriculum)	2	1	0	0	0
2	Rate the syllabus of the courses in relation to the competencies expected out of the course (Related to Curriculum)	1	2	0	0	0
3	Rate the Curriculum facilitation for adoption of new techniques/education tools / strategies in teaching. (Related to Curriculum)	2	0	1	0	0
4	Rate the coverage of Programme / course outcome with the curriculum (Related to Curriculum)	1	0	1	1	0
5	Rate the allocation of the credits and contact hours (L-T-P) to the courses (Related to Curriculum)	1	2	0	0	0
6	Rate the offering of the electives in terms of their relevance to the specialization streams and technological advancements (Related to Curriculum)	1	2	0	0	0
7	Rate the courses in terms of extra learning or self-learning considering the design of the courses. (Related to Curriculum)	1	2	0	0	0
8	Rate the professional development, faculty development and administrative training programs conducted by the institution (Related to Curriculum)	2	1	0	0	0



PRINCE SHRI VENKATESWARA ARTS AND SCIENCE COLLEGE

Gowrivaldam, Chennai-600073.

Affiliated to University of Madras, ISO 9001:2015 Certified Institution
Recognized by UGC under section 2(f) of UGC Act 1956

9	Rate the composition of the courses in terms of Language papers, Core Papers, Allied Papers, Elective Papers, Soft Skills, Non-major Electives, Value Education, Project etc. (Related to Curriculum)	1	2	0	0	0
10	Rate the availability of text books, reference books, Digital Resources and Reading Material Support facilities in library and research environment (Related to infrastructure facilities & ambience of the institution)	1	0	2	0	0
11	Rate the infrastructure available in the college/ department and its usage efficiently (Related to infrastructure facilities & ambience of the institution)	2	1	0	0	0
12	Rate the classroom, lab, IT and other facilities (Related to infrastructure facilities & ambience of the institution)	2	0	1	0	0
13	Rate the maintenance of classrooms, laboratory, sports facilities, faculty cabin, toilets, rest rooms etc. (Related to infrastructure facilities & ambience of the institution)	2	0	1	0	0
14	Rate the encouragement by the institution for performing research, startup and entrepreneurial activities by the faculty (Related to ambience of the institution)	1	2	0	0	0
15	Rate the opportunity extended and financial aid to participate in Faculty development, Conferences, Workshops and etc., (Related to ambience of the institution)	2	1	0	0	0
16	Rate the working environment such as the relationship with co-workers and superiors, organizational culture etc. (Related to ambience of the institution)	2	0	1	0	0
17	Rate the faculty welfare measures taken by the institution (Related to ambience of the institution)	1	1	1	0	0
18	Rate the recognition/ appraisal system / Incentive/ Appreciation of the individual work by the institution (Related to ambience of the institution)	2	1	0	0	0
19	Rate the encouragement for taking-up consultancy works (Related to ambience of the institution)	1	0	1	0	1
20	Rate the uniform work distribution and work load for all the faculty in the department (Related to ambience of the institution)	2	0	1	0	0



B. Kalpana
PRINCIPAL
PRINCE SHRI VENKATESHWARA
ARTS AND SCIENCE COLLEGE
GOWRIVALDAM, CHENNAI-600073



PRINCE SHRI VENKATESWARA ARTS AND SCIENCE COLLEGE

Gowrivakkam, Chennai-600073.

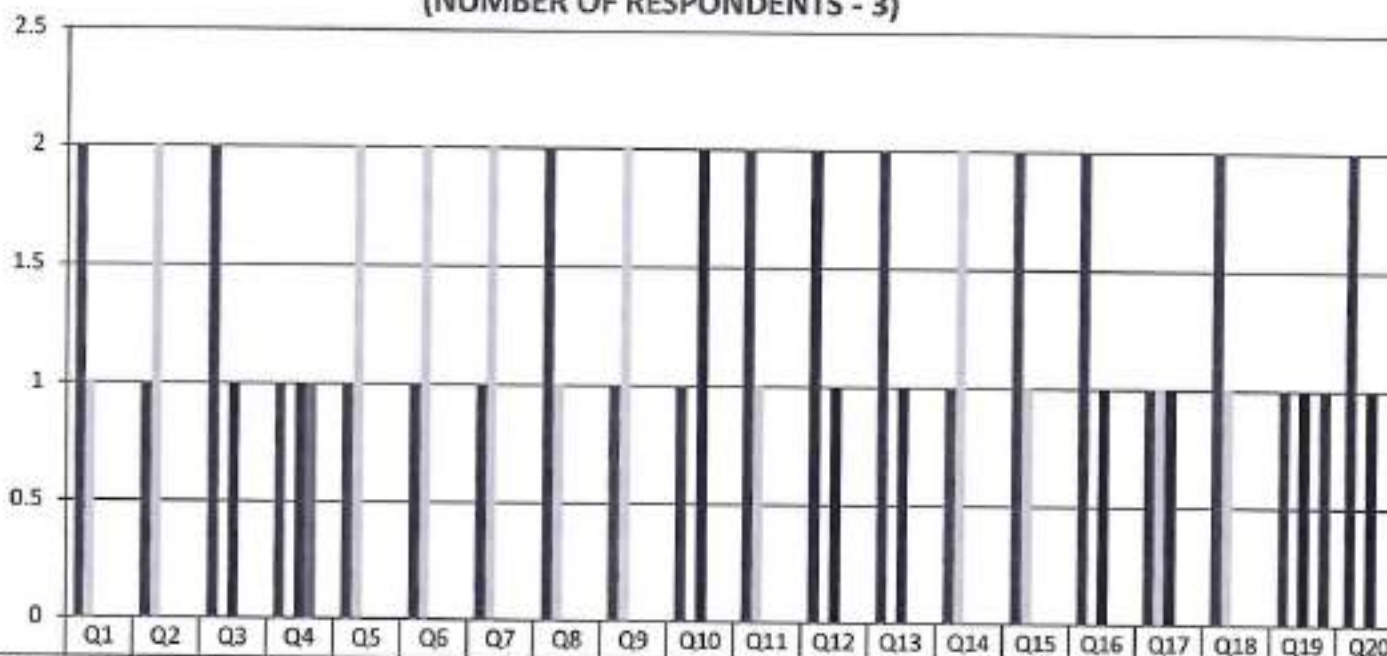
Affiliated to University of Madras, ISO 9001:2015 Certified Institution

Recognized by UGC under section 2(f) of UGC Act 1956

**FACULTY FEEDBACK ON CURRICULUM, INFRASTRUCTURE
FACILITIES & AMBIENCE OF THE INSTITUTION - 2022-2023**

M.Sc. COMPUTER SCIENCE

(NUMBER OF RESPONDENTS - 3)



	Q1	Q2	Q3	Q4	Q5	Q6	Q7	Q8	Q9	Q10	Q11	Q12	Q13	Q14	Q15	Q16	Q17	Q18	Q19	Q20
Strongly Agree (5)	2	1	2	1	1	1	1	2	1	1	2	2	2	1	2	2	1	2	1	2
Agree (4)	1	2	0	0	2	2	2	1	2	0	1	0	0	2	1	0	1	1	0	0
Neutral (3)	0	0	1	1	0	0	0	0	0	2	0	1	1	0	0	1	1	0	1	1
Disagree (2)	0	0	0	1	0	0	0	0	0	0	0	0	0	0	0	0	0	0	0	0
Strongly Disagree (1)	0	0	0	0	0	0	0	0	0	0	0	0	0	0	0	0	0	0	1	0



B. Kalpana
PRINCIPAL
PRINCE SHRI VENKATESHWARA
ARTS AND SCIENCE COLLEGE
GOWRIVAKKAM CHENNAI-600 073.



PRINCE SHRI VENKATESWARA ARTS AND SCIENCE COLLEGE

Gowrivaldham, Chennai-600073.

Affiliated to University of Madras, ISO 9001:2015 Certified Institution
Recognized by UGC under section 2(f) of UGC Act 1956

9	Rate the composition of the courses in terms of Language papers, Core Papers, Allied Papers, Elective Papers, Soft Skills, Non-major Electives, Value Education, Project etc. (Related to Curriculum)	1	1	0	0	0
10	Rate the availability of text books, reference books, Digital Resources and Reading Material Support facilities in library and research environment (Related to infrastructure facilities & ambience of the institution)	2	0	0	0	0
11	Rate the infrastructure available in the college/ department and its usage efficiently (Related to infrastructure facilities & ambience of the institution)	2	0	0	0	0
12	Rate the classroom, lab, IT and other facilities (Related to infrastructure facilities & ambience of the institution)	2	0	0	0	0
13	Rate the maintenance of classrooms, laboratory, sports facilities, faculty cabin, toilets, rest rooms etc. (Related to infrastructure facilities & ambience of the institution)	1	1	0	0	0
14	Rate the encouragement by the institution for performing research, startup and entrepreneurial activities by the faculty (Related to ambience of the institution)	1	0	0	1	0
15	Rate the opportunity extended and financial aid to participate in Faculty development, Conferences, Workshops and etc., (Related to ambience of the institution)	2	0	0	0	0
16	Rate the working environment such as the relationship with co-workers and superiors, organizational culture etc. (Related to ambience of the institution)	1	1	0	0	0
17	Rate the faculty welfare measures taken by the institution (Related to ambience of the institution)	2	0	0	0	0
18	Rate the recognition/ appraisal system / Incentive/ Appreciation of the individual work by the institution (Related to ambience of the institution)	2	0	0	0	0
19	Rate the encouragement for taking-up consultancy works (Related to ambience of the institution)	2	0	0	0	0
20	Rate the uniform work distribution and work load for all the faculty in the department (Related to ambience of the institution)	2	0	0	0	0



B. Kalpana
PRINCIPAL
PRINCE SHRI VENKATESHWARA
ARTS AND SCIENCE COLLEGE
GOWRIVAKKAM, CHENNAI-600 073.



PRINCE SHRI VENKATESWARA ARTS AND SCIENCE COLLEGE

Gowrivakkam, Chennai-600073.

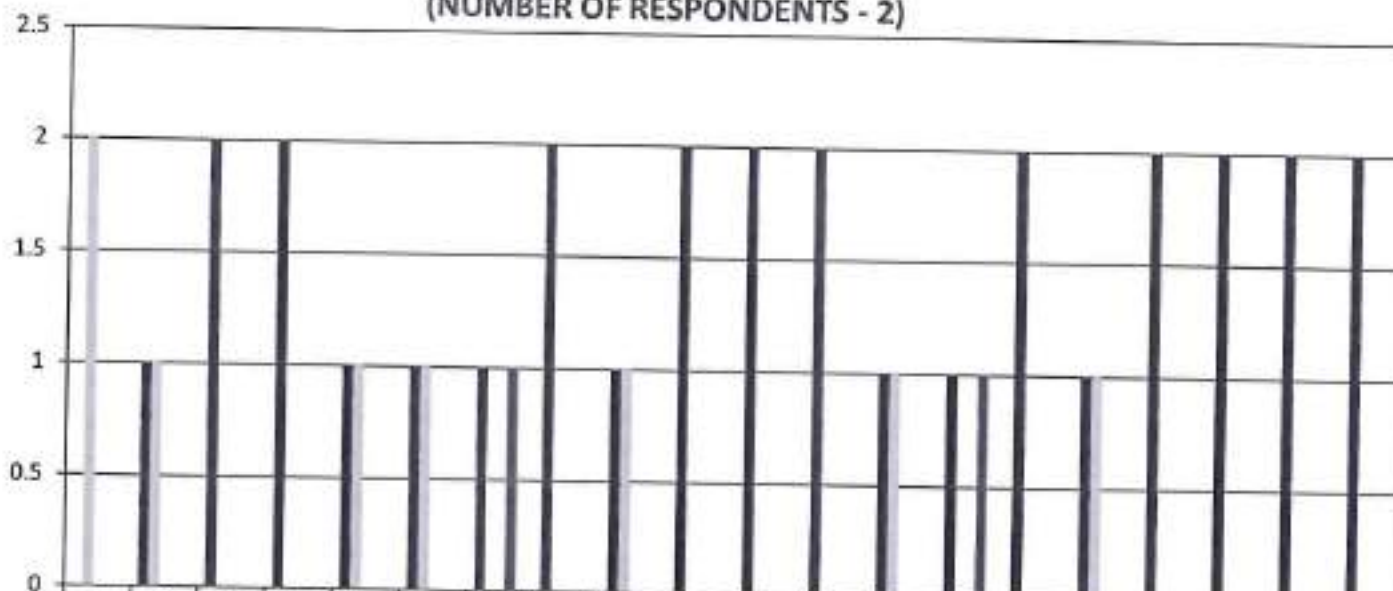
Affiliated to University of Madras, ISO 9001:2015 Certified Institution

Recognized by UGC under section 2(f) of UGC Act 1956

FACULTY FEEDBACK ON CURRICULUM, INFRASTRUCTURE FACILITIES & AMBIENCE OF THE INSTITUTION - 2022-2023

M.Sc. BIOCHEMISTRY

(NUMBER OF RESPONDENTS - 2)



	Q1	Q2	Q3	Q4	Q5	Q6	Q7	Q8	Q9	Q10	Q11	Q12	Q13	Q14	Q15	Q16	Q17	Q18	Q19	Q20
Strongly Agree (5)	0	1	2	2	1	1	1	2	1	2	2	2	1	1	2	1	2	2	2	2
Agree (4)	2	1	0	0	1	1	0	0	1	0	0	0	1	0	0	1	0	0	0	0
Neutral (3)	0	0	0	0	0	0	0	0	0	0	0	0	0	0	0	0	0	0	0	0
Disagree (2)	0	0	0	0	0	0	1	0	0	0	0	0	0	1	0	0	0	0	0	0
Strongly Disagree (1)	0	0	0	0	0	0	0	0	0	0	0	0	0	0	0	0	0	0	0	0



B. Kalpana
PRINCIPAL
 PRINCE SHRI VENKATESHWARA
 ARTS AND SCIENCE COLLEGE
 GOWRIVAKKAM, CHENNAI-600 073



PRINCE SHRI VENKATESWARA ARTS AND SCIENCE COLLEGE

Gowrivakkam, Chennai-600073.

Affiliated to University of Madras, ISO 9001:2015 Certified Institution
Recognized by UGC under section 2(f) of UGC Act 1956

9	Rate the composition of the courses in terms of Language papers, Core Papers, Allied Papers, Elective Papers, Soft Skills, Non-major Electives, Value Education, Project etc. (Related to Curriculum)	1	2	0	0	0
10	Rate the availability of text books, reference books, Digital Resources and Reading Material Support facilities in library and research environment (Related to infrastructure facilities & ambience of the institution)	2	1	0	0	0
11	Rate the infrastructure available in the college/ department and its usage efficiently (Related to infrastructure facilities & ambience of the institution)	2	1	0	0	0
12	Rate the classroom, lab, IT and other facilities (Related to infrastructure facilities & ambience of the institution)	2	1	0	0	0
13	Rate the maintenance of classrooms, laboratory, sports facilities, faculty cabin, toilets, rest rooms etc. (Related to infrastructure facilities & ambience of the institution)	2	1	0	0	0
14	Rate the encouragement by the institution for performing research, startup and entrepreneurial activities by the faculty (Related to ambience of the institution)	3	0	0	0	0
15	Rate the opportunity extended and financial aid to participate in Faculty development, Conferences, Workshops and etc., (Related to ambience of the institution)	1	2	0	0	0
16	Rate the working environment such as the relationship with co-workers and superiors, organizational culture etc. (Related to ambience of the institution)	3	0	0	0	0
17	Rate the faculty welfare measures taken by the institution (Related to ambience of the institution)	2	0	0	1	0
18	Rate the recognition/ appraisal system / Incentive/ Appreciation of the individual work by the institution (Related to ambience of the institution)	2	0	1	0	0
	Rate the encouragement for taking-up consultancy works (Related to ambience of the institution)	1	0	2	0	0
	Rate the uniform work distribution and work load for all the faculty in the department (Related to ambience of the institution)	1	2	0	0	0



B. Kalpana
PRINCIPAL
PRINCE SHRI VENKATESHWARA
ARTS AND SCIENCE COLLEGE
GOWRIVAKKAM



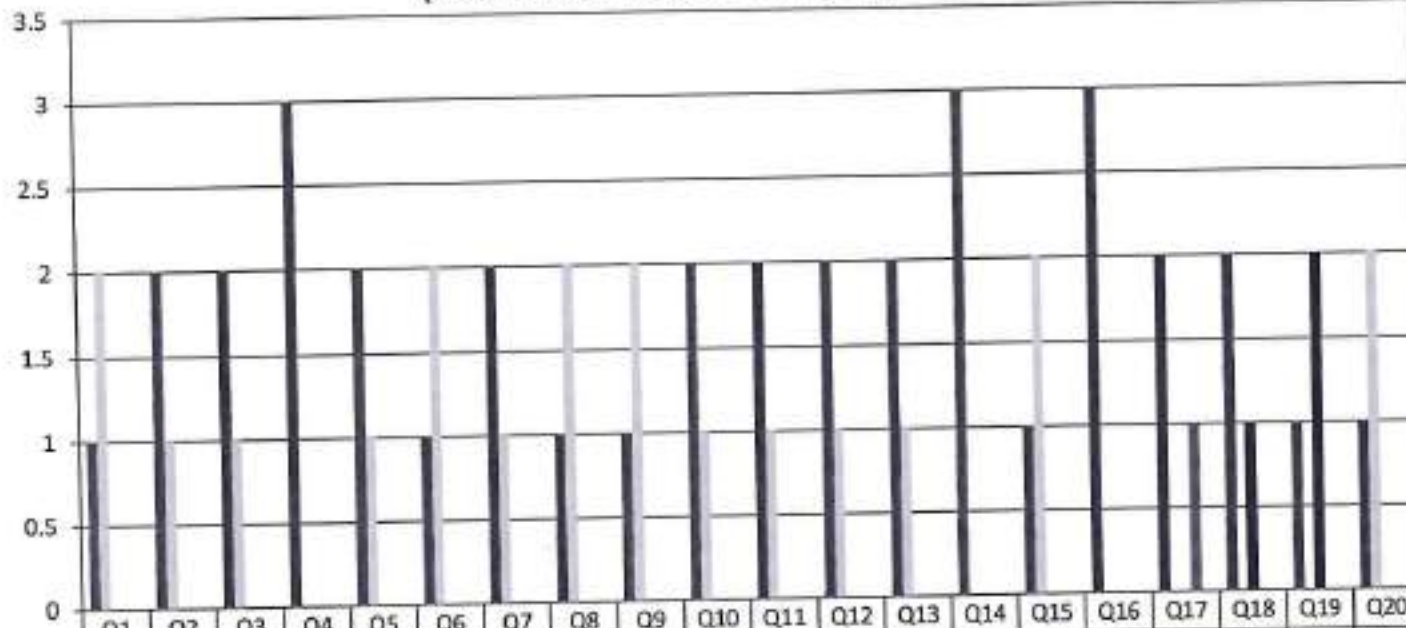
PRINCE SHRI VENKATESWARA ARTS AND SCIENCE COLLEGE

Gowrivakkam, Chennai-600073.

Affiliated to University of Madras, ISO 9001:2015 Certified Institution
Recognized by UGC under section 2(f) of UGC Act 1956

FACULTY FEEDBACK ON CURRICULUM, INFRASTRUCTURE FACILITIES & AMBIENCE OF THE INSTITUTION - 2022-2023

M.Sc. BIOTECHNOLOGY (NUMBER OF RESPONDENTS - 3)



B. Kalpana
PRINCIPAL
PRINCE SHRI VENKATESHWARA
ARTS AND SCIENCE COLLEGE
GOWRIVAKKAM, CHENNAI-600 073.



PRINCE SHRI VENKATESWARA ARTS AND SCIENCE COLLEGE

Gowrivaldkam, Chennai-600073.

Affiliated to University of Madras, ISO 9001:2015 Certified Institution
Recognized by UGC under section 2(f) of UGC Act 1956

9	Rate the composition of the courses in terms of Language papers, Core Papers, Allied Papers, Elective Papers, Soft Skills, Non-major Electives, Value Education, Project etc. (Related to Curriculum)	2	0	1	0	0
10	Rate the availability of text books, reference books, Digital Resources and Reading Material Support facilities in library and research environment (Related to infrastructure facilities & ambience of the institution)	2	1	0	0	0
11	Rate the infrastructure available in the college/ department and its usage efficiently (Related to infrastructure facilities & ambience of the institution)	1	2	0	0	0
12	Rate the classroom, lab, IT and other facilities (Related to infrastructure facilities & ambience of the institution)	1	1	1	0	0
13	Rate the maintenance of classrooms, laboratory, sports facilities, faculty cabin, toilets, rest rooms etc. (Related to infrastructure facilities & ambience of the institution)	1	2	0	0	0
14	Rate the encouragement by the institution for performing research, startup and entrepreneurial activities by the faculty (Related to ambience of the institution)	2	1	0	0	0
15	Rate the opportunity extended and financial aid to participate in Faculty development, Conferences, Workshops and etc., (Related to ambience of the institution)	2	1	0	0	0
16	Rate the working environment such as the relationship with co-workers and superiors, organizational culture etc. (Related to ambience of the institution)	1	0	1	1	0
17	Rate the faculty welfare measures taken by the institution (Related to ambience of the institution)	1	1	1	0	0
18	Rate the recognition/ appraisal system / Incentive/ Appreciation of the individual work by the institution (Related to ambience of the institution)	2	0	1	0	0
19	Rate the encouragement for taking-up consultancy works (Related to ambience of the institution)	2	1	0	0	0
20	Rate the uniform work distribution and work load for all the faculty in the department (Related to ambience of the institution)	2	0	1	0	0



B. Kalpana
PRINCIPAL

PRINCE SHRI VENKATESHWARA
ARTS AND SCIENCE COLLEGE
GOWRIVAKKAM, CHENNAI-600 073.



PRINCE SHRI VENKATESWARA ARTS AND SCIENCE COLLEGE

Gowrivakkam, Chennai-600073.

Affiliated to University of Madras, EO 9001:2015 Certified Institution
Recognized by UGC under section 2(f) of UGC Act 1956

**FACULTY FEEDBACK ON CURRICULUM, INFRASTRUCTURE
FACILITIES & AMBIENCE OF THE INSTITUTION - 2022-2023
M.COM**

(NUMBER OF RESPONDENTS - 3)



B. Kalpana
PRINCIPAL
PRINCE SHRI VENKATESWARA
ARTS AND SCIENCE COLLEGE
GOWRIVAKKAM, CHENNAI-600 073